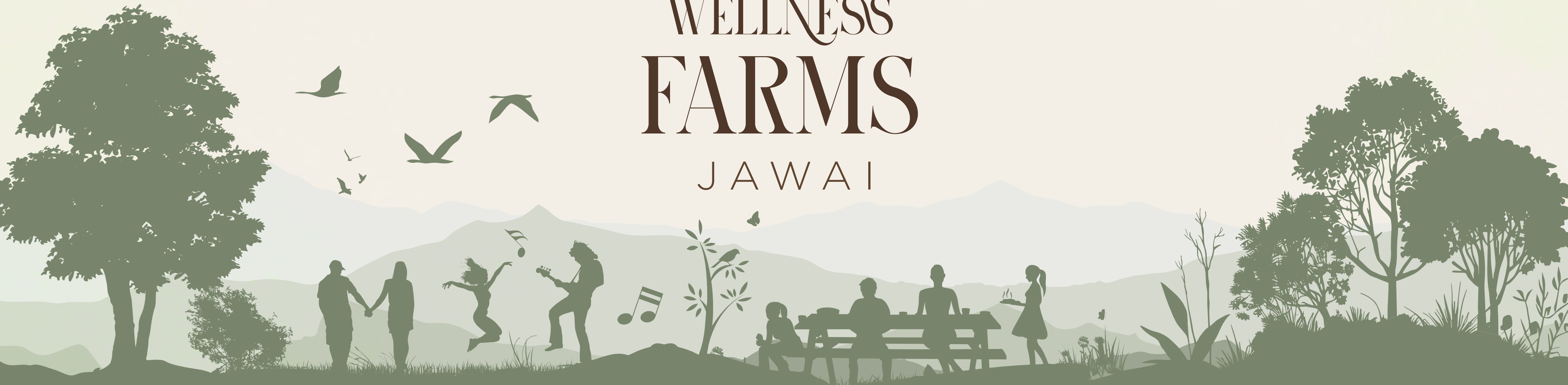




**KAMAH**<sup>®</sup>  
LUXURY • LIFESTYLE • WELLNESS

# WELLNESS FARMS JAWAI



YOUR PERSONAL ESCAPE, PROFESSIONALLY MANAGED



## Managed Luxury in Nature

A pioneering concept that combines the serenity of nature, thoughtfully designed luxury spaces and effortless professional management. Each farm offers private green landscapes, wellness amenities and curated leisure, while all operational responsibilities are handled seamlessly, allowing owners to fully immerse in the joy of wellness living.



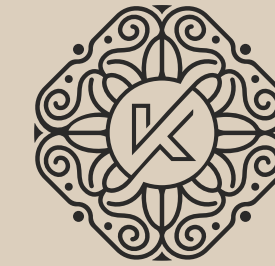
## MANAGED WELLNESS FARMS

# A Retreat Crafted in Nature's Rhythm



Amidst the timeless hills and wilderness of Jawai lies a retreat where mornings awaken with birdsong and evenings glow under starlit skies. The Kamah Wellness Farm is a sanctuary where nature sets the rhythm of life.

Designed as private retreats, these Wellness Farm blend expansive landscapes with the indulgence of a pool, thoughtfully curated spaces and wellness-driven amenities. It is a lifestyle of luxury and rejuvenation, inviting you to pause, breathe and rediscover balance.



**KAMAH**<sup>®</sup>  
LUXURY • LIFESTYLE • WELLNESS

#### BEHIND THE MANAGEMENT

## *A Legacy of Lifestyle & Wellness*

Each Managed Wellness Farm reflects Kamah's dedication to creating rare, refined retreats. Thoughtful design, premium amenities and seamless professional management combine to deliver an experience of luxury, privacy and tranquility.

Limited in number and meticulously maintained, these farms offer a truly exclusive sanctuary that balances nature, wellness and sophistication.



## JAWAI

# Wilderness, Wildlife, Wonder



Jawai's pristine landscapes, framed by granite hills, the meandering river and the serene Jawai Dam, offer a rare blend of adventure, tranquility and natural beauty. Known for its thriving leopard population and rich biodiversity, the region draws discerning travelers seeking exclusive experiences.

The local Rebari tribe, known for their rich culture and traditional pastoral lifestyle, adds a unique human touch to the wilderness. Being part of this rising tourist destination means immersing in nature's splendor while enjoying a lifestyle that is both rewarding and enduring.

## WELLNESS FARM LOCATION

# Living by the Soul of Jawai River

Nestled amidst the granite hills of Jawai, the Wellness Farm offers a serene escape where nature reigns supreme. Surrounded by open landscapes, near the iconic Jawai Dam and thriving wildlife, including the region's famous leopards, it is a sanctuary of calm.

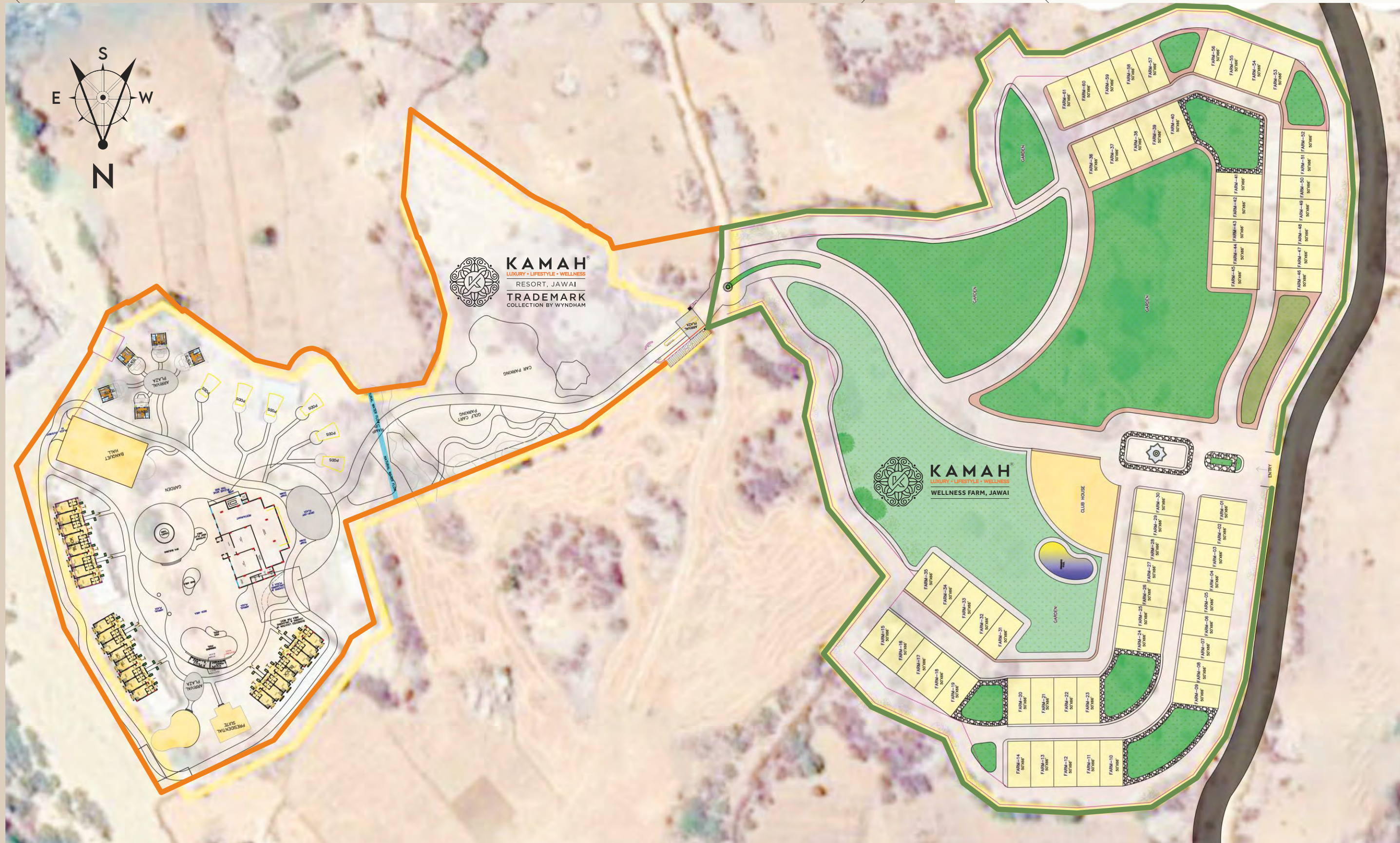
Despite its peaceful seclusion, the location is easily accessible, perfectly balancing privacy with connectivity to key destinations.



Scan for location

- 120 km / 1.5 hrs from Udaipur Airport
- 150 km / 2.0 hrs from Jodhpur Airport
- 280 km / 3.5 hrs drive from Ahmedabad

- 360 km / 5.0 hrs drive from Jaipur
- Easy connectivity by train.
- Well-connected road network across Rajasthan & Gujarat



## MASTER PLAN

# A Landscape of Possibilities

Planned with precision and shaped by vision, the layout ensures exclusivity, comfort and balance in perfect proportion.

 KAMAH WELLNESS FARMS

 KAMAH RESORT JAWAI,  
TRADEMARK COLLECTION BY WYNDHAM

All the farmhouse are of uniform size, Measuring 15X20m (367 Sq. Yd.)

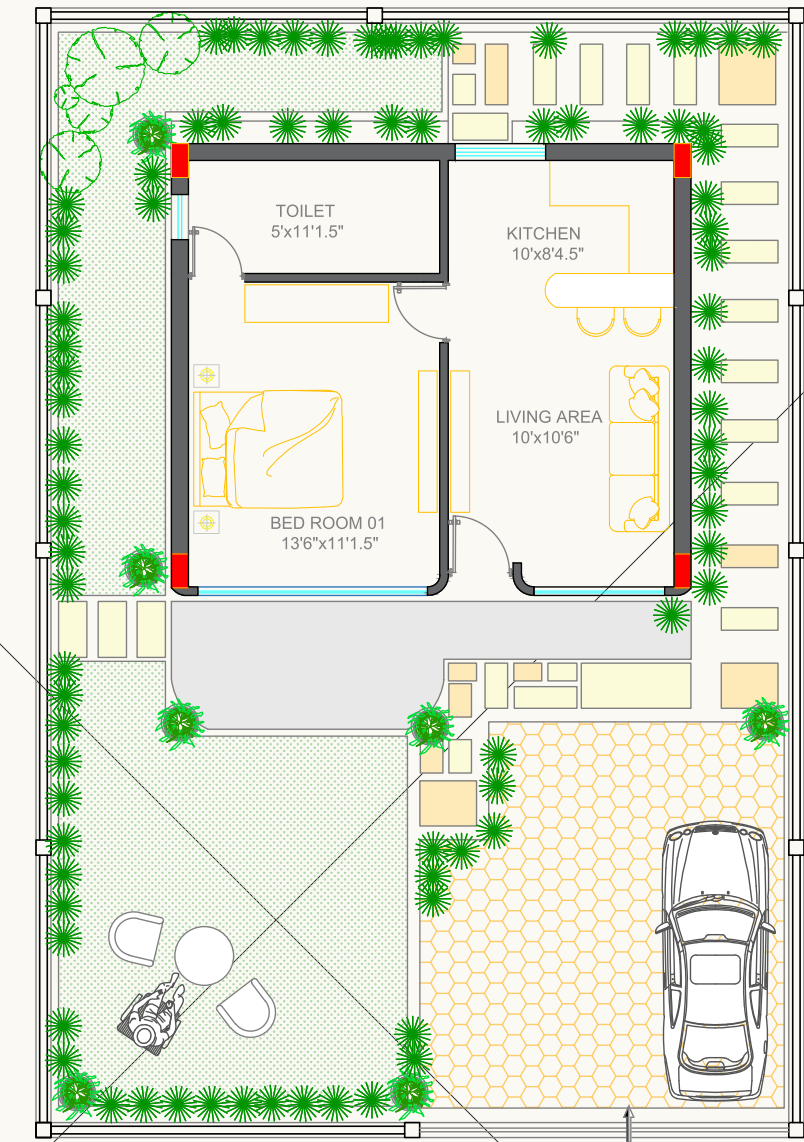


**61 EXCLUSIVE FARMS**

## Where Outer Charm, Meets Inner Calm



Scarcity defines value. With only 61 exclusive farms thoughtfully curated to offer unmatched privacy and privilege. Limited in number yet expansive in experience, each unit reflects a lifestyle of luxury, wellness and exclusivity.

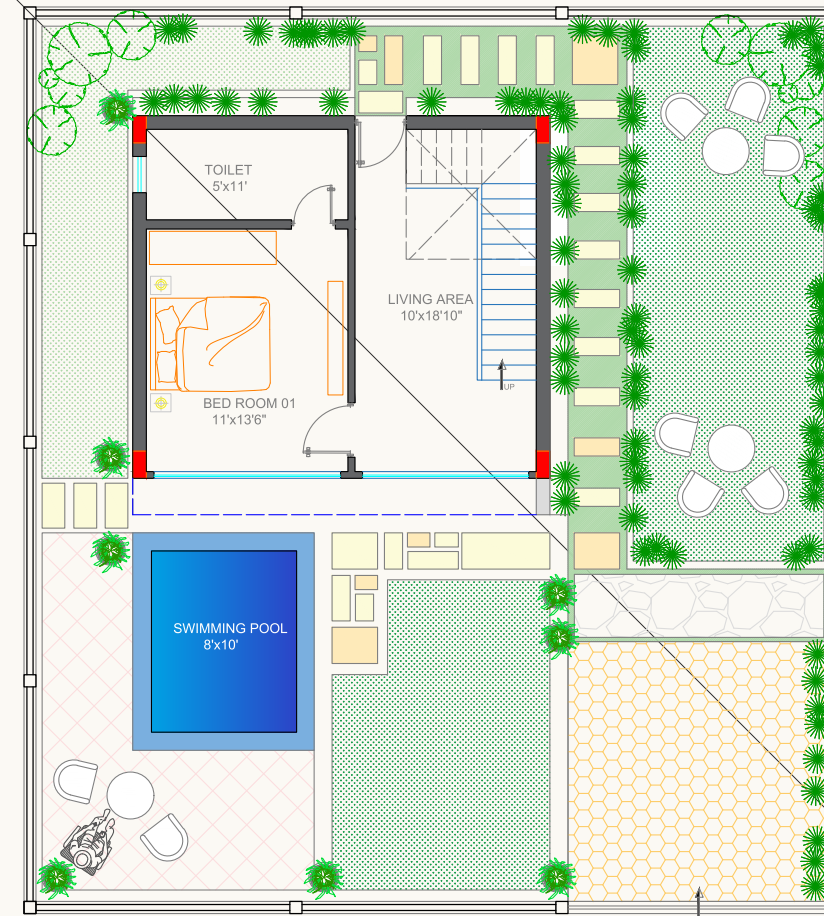


**TYPICAL FLOOR PLAN**  
Area: 700 sq.ft. | No. of Unit: 10

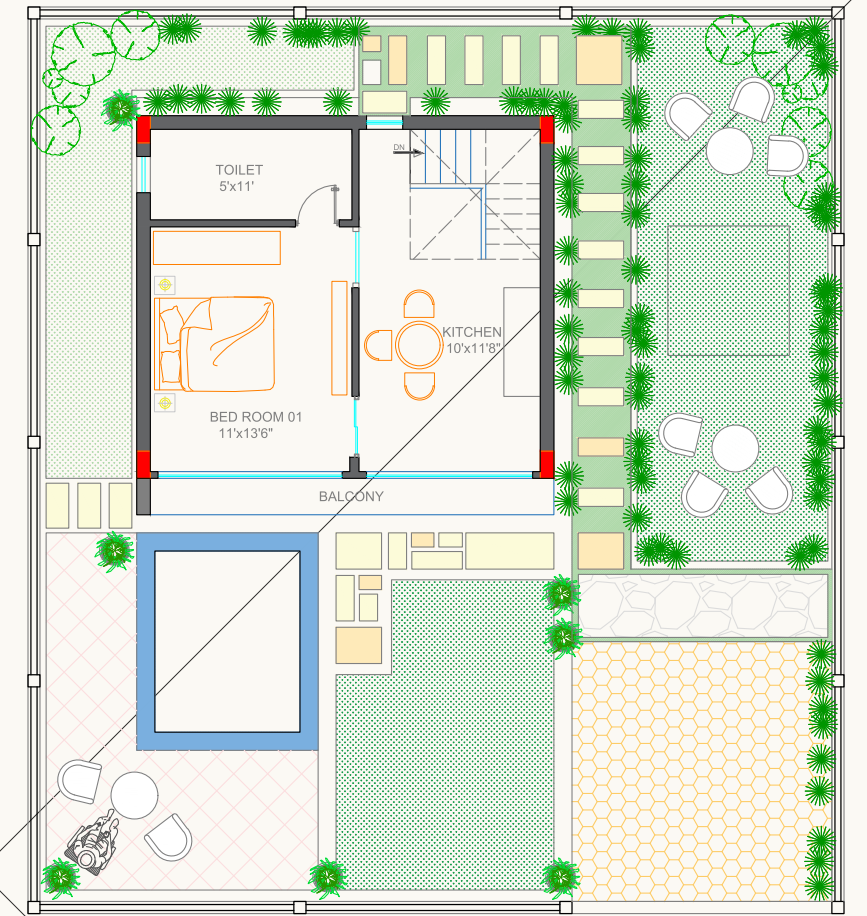


## 1 BHK Farm

The elegant farms crafted for exclusivity and efficiency without compromising on lifestyle. These compact villas provide a private, intimate space with access to all wellness and leisure amenities.



Ground Floor



First Floor

### TYPICAL FLOOR PLAN

Area: 1320 sq.ft. | No. of Unit: 51

## 2 BHK Duplex Farm with Pool

These spacious farms, are designed for comfort, privacy and a wellness-focused lifestyle. With thoughtfully planned interiors, open green spaces and premium amenities, they offer the perfect balance of luxury and serenity.





INTERIORS THAT INSPIRE

## The Refined Touch

Each Wellness Farm villa is designed with meticulous attention to detail, blending contemporary design with the calm of natural surroundings. Thoughtfully planned spaces, premium finishes and abundant natural light create an atmosphere of peace and refined living.

Every detail from open layouts to carefully selected materials is curated to enhance comfort, wellness and a sense of timeless elegance.

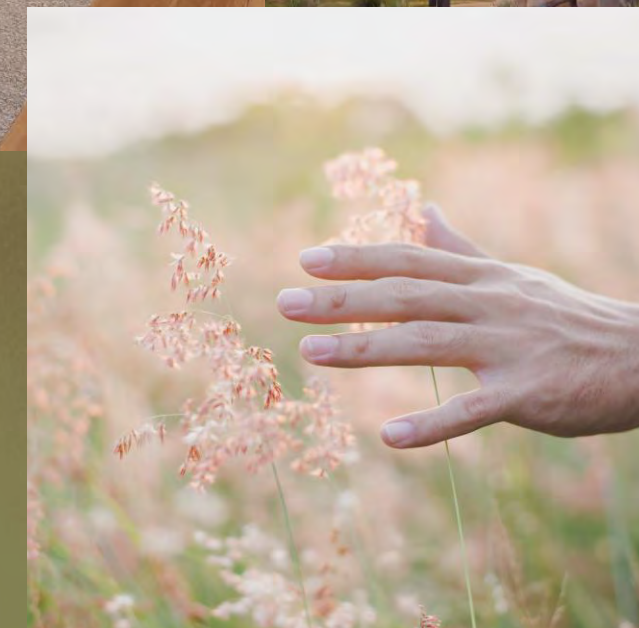
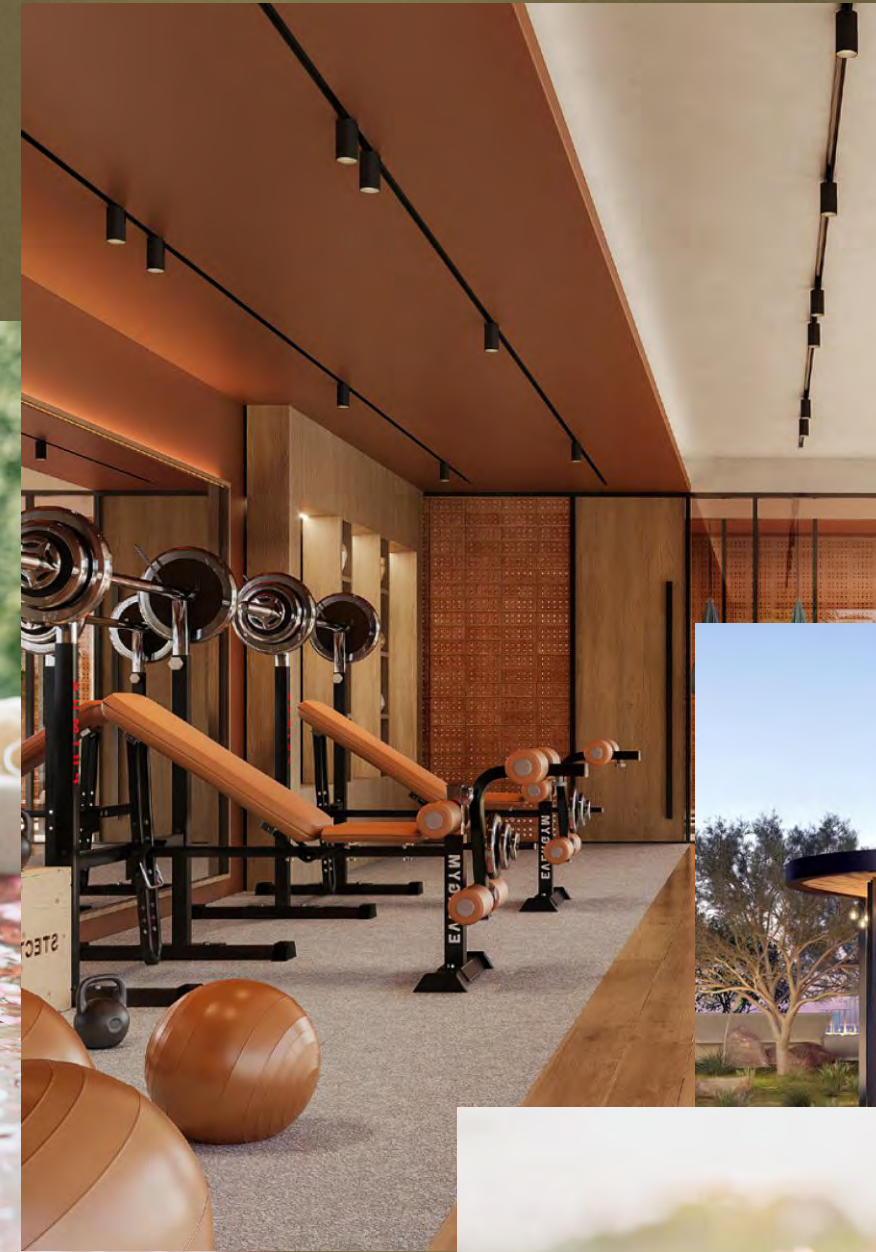
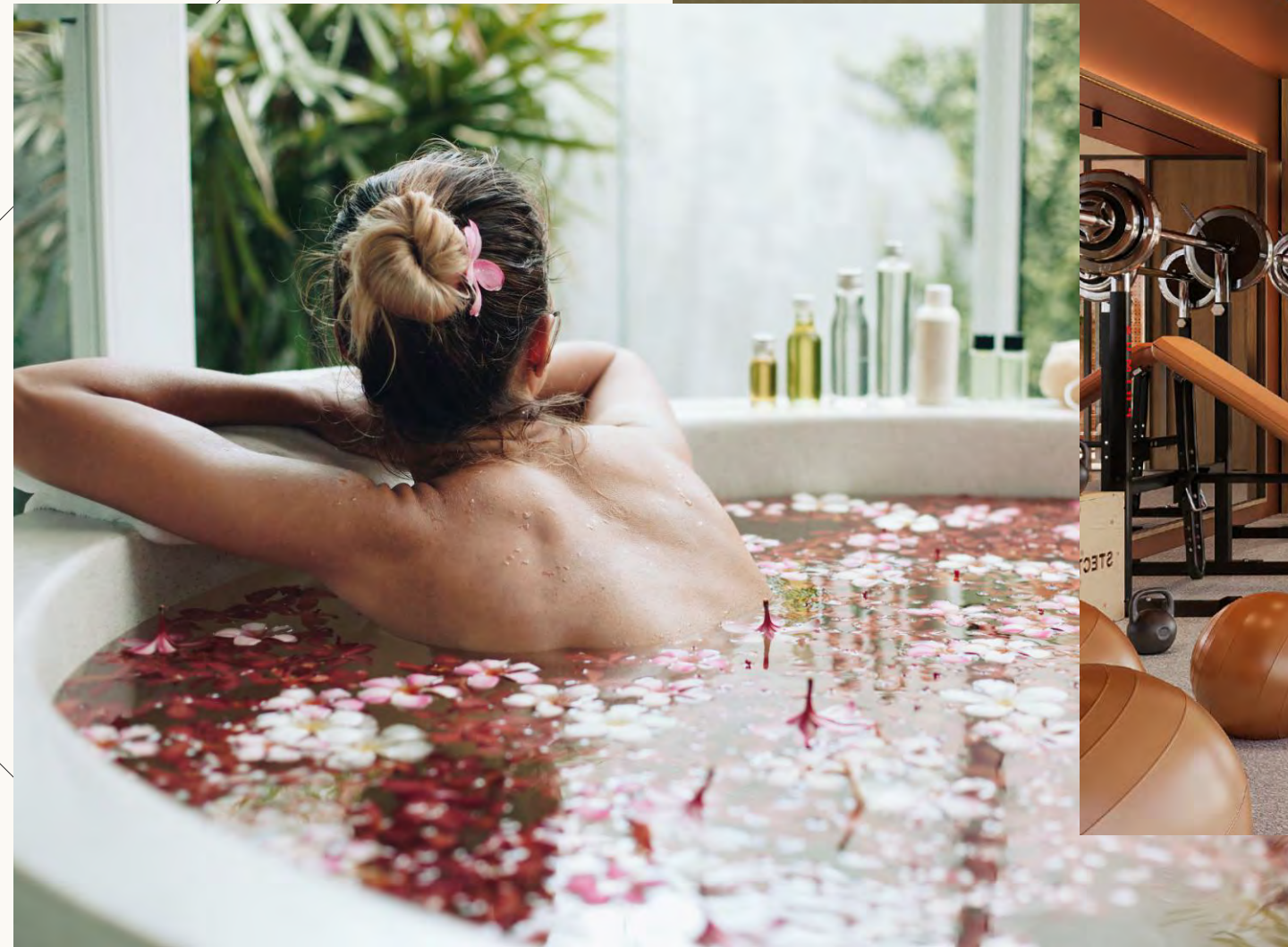
## INDULGENCES









# Rejuvenate, Connect and Celebrate



Every corner of the wellness farms is designed to delight. Every need is anticipated and every moment feels effortless. Life flows seamlessly between leisure and luxury, allowing you to relax and rejuvenate.

A curated range of amenities and spaces ensures wellness, celebration and connection are always within reach.



-  Club House
-  Swimming Pool
-  Pocket Parks & Open Lawns
-  Kids Play Area
-  Indoor & Outdoor Games Facilities
-  Café & Lounge
-  Nature Safari
-  Yoga Zones
-  Fitness & Sports Centre
-  Jogging Tracks
-  Pet Park


WELLNESS ZONES

# Engage All Your Senses

A sanctuary where every sense is awakened and every moment nurtures calm, balance and vitality.

**SOUND**  
Symphony of Nature

Immerse yourself in the soothing sounds of flowing water, rustling leaves and distant wildlife, creating a natural melody for relaxation.




**TOUCH**  
Textures of Tranquility

Feel the textures of nature – soft grass, warm sunlight and cool breezes, grounding you in every moment.




**SIGHT**  
Scenic Serenity

Immerse yourself in panoramic views of Jawai's hills, open plains and landscapes where every glance bring calm and inspiration.




**TASTE**  
Nourishment & Purity

Enjoy thoughtfully curated flavors drawn from nature's bounty, that nourishes the body and refreshes the senses.



**SMELL**  
Aromas of the Wild

Breathe in the fresh scents of native flora, morning dew and fragrant gardens, creating a refreshing and grounding atmosphere.





## NATURE'S VOWS

# Celebrate Love Amidst Jawai's Majestic Landscapes

Jawai has emerged as one of India's most unique wedding destinations, offering couples the chance to celebrate amidst majestic granite hills and shimmering lake.

The dramatic landscapes provide the perfect backdrop for grand festivities as well as soulful rituals, ensuring every celebration becomes a story told for generations.





## EXCLUSIVE ENTITLEMENTS

# Lifestyle and Ownership Perks

Ownership opens the door to a world of privileges, effortless access to all amenities and curated lifestyle discounts, from fine dining and spa indulgences to luxury transfers, laundry and event booking.

Every detail is designed to enhance the experience, while a profit-sharing model ensures the investment grows as seamlessly as enjoyment. Beyond this, ownership brings

- High returns
- Zero-Maintenance ownership
- Annual Complimentary Staycations
- Complimentary Grand Wedding
- And More...

## SUSTAINABILITY

# Luxury that Respects the Earth

Wellness farms are thoughtfully designed to minimize environmental impact while maximizing harmony with its surroundings.

Eco-conscious planning, resource-efficient practices, and nature-integrated design ensure that the lifestyle and investment coexist sustainably with the pristine wilderness of Jawai.



Natural and structural shading for thermal comfort



Soil health focus to improve water retention



Vegetation that enhances air quality and cools surroundings



Biodiversity enhancement to support local ecosystems



Sustainable planting with native, drought-resistant flora



Automated irrigation system for efficient water use



*Get in touch :*

**JAIPUR (HO)**  
3rd Floor, MD Tower, DCM, Ajmer Road,  
Jaipur, Rajasthan (India)

+ 91 93516 55155 | [contact@fineacers.com](mailto:contact@fineacers.com)

### JODHPUR

401, Sanskriti Tower, Main Chopasni Road, Bombay Motors Circle, Jodhpur, Rajasthan (India)

### DUBAI

Office No. 3, JW Marriott Marquis, Business Bay, Dubai (UAE)

### MANGALORE

Shop No. S3-S4, 2<sup>nd</sup> Floor, New Berry Enclave, Kapikad, Bejai, Mangalore, Karnataka (India)

### MUMBAI

B 314A, Kanakia Wall Street, Andheri - Kurla Road, Chakala, Andheri East, Mumbai, Maharashtra (India)

### JAIPUR

Ground Floor, M.L. Tower, Teja Circle, Jaipur, Rajasthan (India)

### SINGAPORE

Pasir Panjang Road, West Coast, Singapore-117503

[www.fineacers.com](http://www.fineacers.com)



[www.fineacers.com](http://www.fineacers.com)

Disclaimer - This brochure is purely conceptual and do not constitute a legally binding offer. Some images are artist's impressions and not necessarily fully representative. In the interest of maintaining high standards, the contents herein, including all services, infrastructure, products, designs, amenities, facilities, site plans, layout plans, floor plans, areas, dimension, specification, elevations and perspectives views are tentative in nature and are subject to variations and modifications, without notice, till the final completion of the project, at the sole discretion of Competent, Statutory Authorities or the Company. Architectural features may differ in different rooms. Soft Furniture, furniture and gadgets are not part of the offering. Some images are an artistic conceptualization and does not purport to replicate the exact products.